

Specifications: RefleX 7105

Weights & Measures

Weight (complete system)	2040 pounds	927 kilograms
Weight (machine only)	1940 pounds	882 kilograms
Weight (maximum workpiece)	2000 pounds	909 kilograms
Measuring Range XYZ	29.5x41.6x19.7 inches	(750x1057x500mm)
Work Capacity XYZ	32.5x53.0x22.5 inches	(830x1347x580mm)
Shipping Weight:	2300 pounds	1045 kilograms
Minimum door opening:	47.5x87.5 inches	1210x2220 mm

Center of Gravity is noted on shipping crates.

Room Air

Nominal room air temperature: 68°F (20°C)

Daily temperature cycle: 1.8°F (1.0°C)

Measure at mid-X, mid-Y and mid-Z. Start measurements at least 24 hours before performance tests and continue through end of tests. Measurement interval 5 minutes or less. Calculate mean temperature for each hour. Specification is permissible difference between each hourly mean and nominal temperature.

Superimposed cycle: 1.8°F (1.0°C)

Air-conditioning cycle:

Frequency 4 cycles per hour minimum. Specification is permissible difference between each measurement and the mean for the hour in which it occurs.

Spacial temperature variation: 1.8°F (1.0°C)

No exposure to sunlight. Indirect or fluorescent lighting preferred.

Minimum of 10 air changes per hour.

Relative humidity 20-90%, non-condensing.

Specifications: RefleX 765/7105

Provide Class 100,000 or better environment (see below).

Class Limits - Particles per Cubic Foot of sizes greater than or equal to sizes shown

Particle size in micrometers

Class	0.1	0.2	0.3	0.5	5
1	35	7.5	3	1	-
10	350	75	30	10	-
100	-	750	300	100	-
1000	-	-	-	1000	7
10000	-	-	-	10000	70
100000	-	-	-	100000	700

Nominal temperature: 68°F (20°C)

Humidity: 100 grains/lb max. (14 g/kg max.)

Pressure variation: ±3 psi (±0.2 BAR)

Temperature variation: ±7°F (±4°C)

Inlet pressure: 75-120 psig (5.2 - 8.3 BAR)

Flow: 4 SCFM - minimum (115 LPM - minimum)

Frequency 0 Hz to 6 Hz <0.001 mm

Frequency 6 Hz to 50 Hz < 0.0005 mm

Frequency > 50 Hz < 0.001 mm

Maximum Sound Pressure: 65 dB(A)
(Right side of machine)

Environment Classes

Compressed Air-(Measured at inlet to machine filter)

Floor Vibration

Noise Level

Specifications: Reflex 765/7105

Tests are performed with Renishaw PH1 probe head, TP2-5 probe, and a 10mm stylus. Repeatability is performed with a trihedral probe.

Performance in Standard Environment

Scale Resolution:	0.0000625mm	0.0000025"
Display Range:	±9999.999mm	±999.99999"
Display Resolution	0.001mm	0.00001"

ANSI/ASME B89.1.12M - 1990:

Linear Displacement Accuracy (5.4.2.1):

X Axis (765)	0.005 mm	0.0002"
Y Axis (765)	0.005 mm	0.0002"
Z Axis (765)	0.005 mm	0.0002"
X Axis (7105)	0.006 mm	0.00024"
Y Axis (7105)	0.006 mm	0.00024"
Z Axis (7105)	0.006 mm	0.00024"

Volumetric Performance (5.5.2): (Performance/Ball Bar Lg.)

0.010 mm / 400mm	0.0004" /15.8"
------------------	----------------

Repeatability (5.3.3.2):

0.004mm	0.00016"
---------	----------

VDI/VDE 2617 Standard:

(L = The measured length expressed in mm)

U1	4 + 3L/1000µm	0.00016 + 3µin/in
U2	4 + 3L/1000µm	0.00016 + 3µin/in
U3	4 + 4L/1000µm	0.00016 + 4µin/in

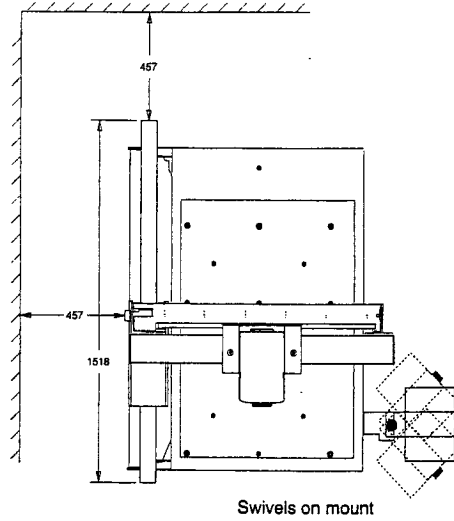
JIS B7440 (1967):

(L = The measured length expressed in mm)

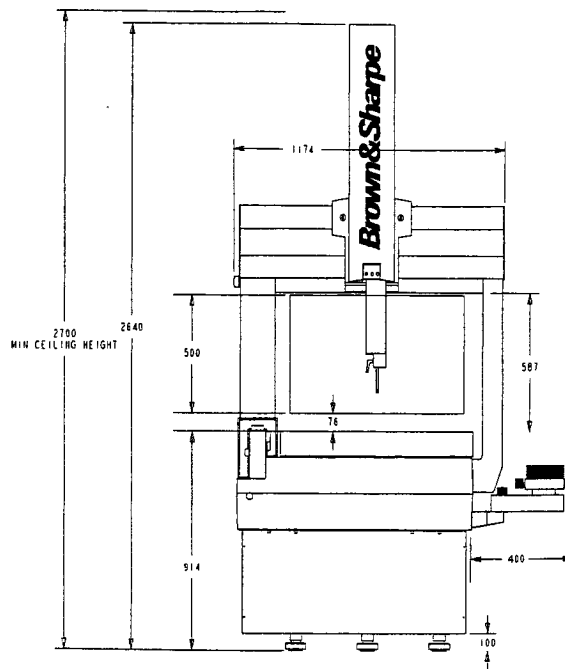
U1X	0.004 + 0.003L/1000MM ≤ 5.8	0.00016 + 3 ≤ 0.00023 µin/in
U1Y(765)	0.004 + 0.003L/1000MM ≤ 5.6	0.00016 + 3 ≤ 0.00022 µin/in
U1Y(7105)	0.004 + 0.003L/1000MM ≤ 6.5	0.00016 + 3 ≤ 0.00026 µin/in
U1Z	0.004 + 0.003L/1000MM ≤ 5.2	0.00016 + 3 ≤ 0.00020 µin/in
U3(765)	0.004 + 0.004L/1000MM ≤ 7.5	0.00016 + 4 ≤ 0.00030 µin/in
U3(7105)	0.004 + 0.004L/1000MM ≤ 8.4	0.00016 + 4 ≤ 0.00033 µin/in

* NOTE: Additional performance characteristics provided upon request.

Floor Plan: Reflex 7105



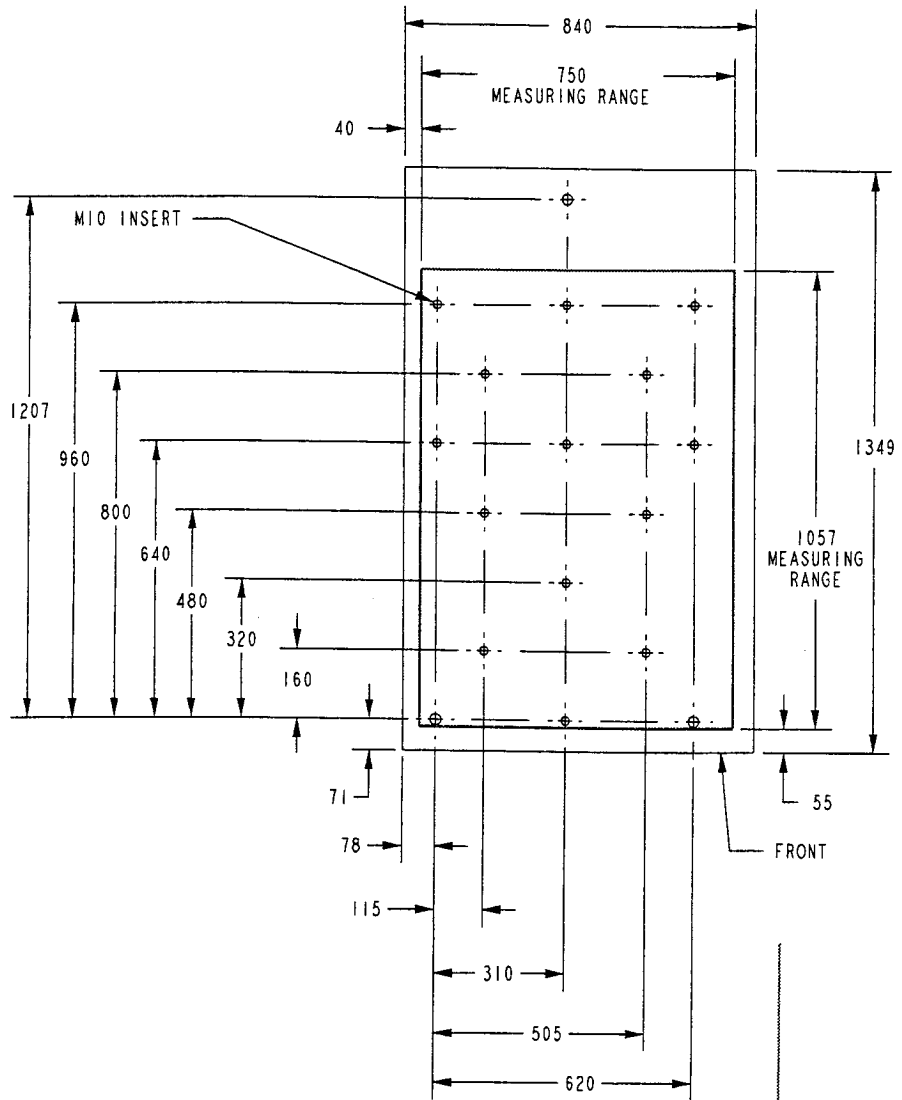
PLAN VIEW



FRONT VIEW

Floor Plan: Reflex 7105

Worktable



Description

